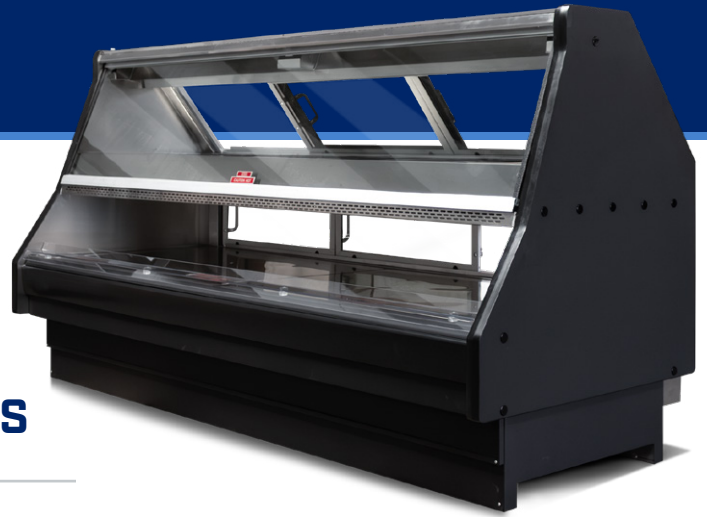


PG 2-4 **Units with FLUORESCENT LIGHTS**

PG 5 **How to Order Your Parts**

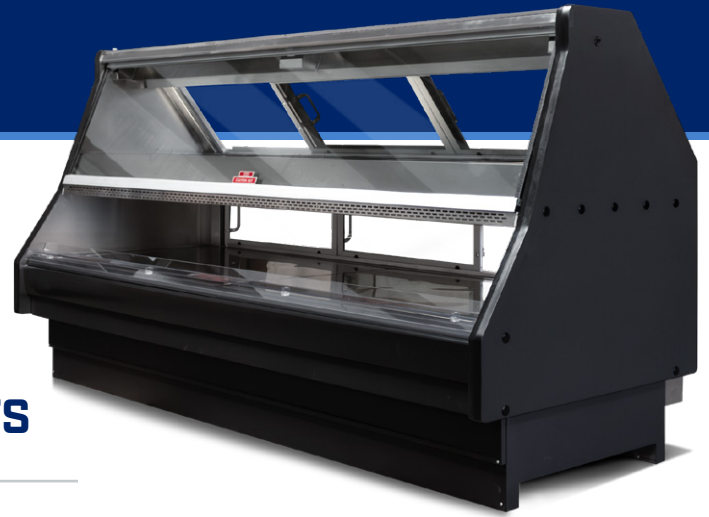


BASIC EQUIPMENT PARTS BREAKDOWN
for Units with **FLUORESCENT LIGHTS**

8' HOT CASE-R 101 with *FLUORESCENT* lights

PART NUMBER	QTY	DESCRIPTION
CDI-518	2	PHILLIPS 2-F25T8 - 25 WATT FLORESENT- 35 1/4"
CDI-500	1	PHILLIPS F40T8-40 WATT FLORESENT - 60"-
CDI-774	1	TOP SECTION- LIGHT BALLAST
CDI-776	1	BOTTOM SECTION-LIGHT BALLAST
CDI-544	6	FLORESCENT BULB SOCKET(2008-2010)
CDI-642	2	TOP SECTION- HEATER TUBE 700WATTS
CDI-586	2	BOTTOM SECTION- HEATER TUBE 450 WATTS
CDI-47	4	HEATER TUBE-SOCKET
CDI-11	4 FT	GASKET- LEFT/ RIGHT
CDI-441	2	TOP SECTION "E" DOOR GASKET
CDI-495	2	BOTTOM SECTION "E" DOOR GASKET
CDI-502	1	TOP CENTER- DOOR SWIPE KIT
CDI-505	1	BOTTOM CENTER-DOOR SWIPE KIT
CDI-13	FT	GLASS- GASKET
CDI-149	4	BLACK TRIM LOCK
CDI-316	8 FT	HALF MOON GASKET
CDI-334	1	TOP LEFT DOOR
CDI-335	1	TOP RIGHT DOOR
CDI-336	1	TOP CENTER DOOR
CDI-337	1	BOTTOM LEFT DOOR
CDI-338	1	BOTTOM RIGHT DOOR
CDI-339	1	BOTTOM CENTER DOOR

Parts Breakdown Continued on Next Page >

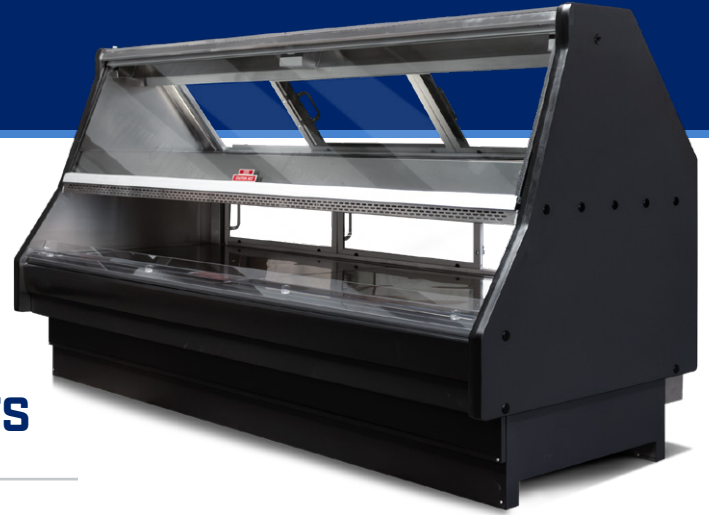


BASIC EQUIPMENT PARTS BREAKDOWN
for **Units with FLUORESCENT LIGHTS**

8' HOT CASE-R 101 with *FLUORESCENT* lights (cont.)

PART NUMBER	QTY	DESCRIPTION
CDI-272	1	FRONT LIFT GLASS
CDI-53	8	SLIDING DOOR HANDLE WITH SCREWS
CDI-483	1	8' L LIFT GLASS HANDLE WITH GASKET
CDI-233-S	EA	CERAMIC WIRE NUT (SMALL)
CDI-233-M	EA	CERAMIC WIRE NUT (MEDIUM)
CDI-233-L	EA	CERAMIC WIRE NUT (LARGE)
CDI-607	1	BOTTOM FRONT LEXAN PRODUCT STOPPER
CDI-249	9	SOLID STATE RELAY
CDI-257	7	TOP SECTION (THERMO COUPLER) SENSOR PROBE
CDI-439	2	BOTTOM SECTION SENSOR PROBE
CDI-281	3	TOP HEAT SHIELD SPACER BARS
CDI-356	3	BACK HEAT SHIELD SPACER BARS
CDI-282	12	THUMB NUTS
CDI-398	2	LEFT & RIGHT SHOCK FOR FRONT LIFT GLASS
CDI-399	1	CENTER SHOCK FOR FRONT LIFT GLASS
CDI-395	1	ROCKER SWITCH
CDI-572	1	MAIN POWER SWITCH 40AMP/3POLE
CDI-611	1	HEATER TUBE SWITCH 30 AMP/2POLE
CDI-579-WT	7	ELEMENT 500W/208V NEW WATER CASES
CDI-621-WT	2	HEATER PLATE COMPLETE ASSY 500 WATT 208 VOLT - TOP -REM -WT Store consist: element, element mount.
CDI-580	2	ELEMENT (BOTTOM DECK)
CDI-442-208V	2	BOTTOM DECK COMPLETE (LEFT SIDE)

Parts Breakdown Continued on Next Page >



BASIC EQUIPMENT PARTS BREAKDOWN
for **Units with FLUORESCENT LIGHTS**

8' HOT CASE-R 101 with *FLUORESCENT* lights (cont.)

PART NUMBER	QTY	DESCRIPTION
CDI-742-WT-8-1	1	RED LION PXU KEYPAD CONTROLLER - REM STORE - 8 HOT-R - ZONE #1
CDI-742-WT-8-2	1	RED LION PXU KEYPAD CONTROLLER - REM STORE - 8 HOT-R - ZONE #2
CDI-742-WT-8-3	1	RED LION PXU KEYPAD CONTROLLER - REM STORE - 8 HOT-R - ZONE #3
CDI-742-WT-8-4	1	RED LION PXU KEYPAD CONTROLLER - REM STORE - 8 HOT-R - ZONE #4
CDI-742-WT-8-5	1	RED LION PXU KEYPAD CONTROLLER - REM STORE - 8 HOT-R - ZONE #5
CDI-742-WT-8-6	1	RED LION PXU KEYPAD CONTROLLER - REM STORE - 8 HOT-R - ZONE #6
CDI-742-WT-8-7	1	RED LION PXU KEYPAD CONTROLLER - REM STORE - 8 HOT-R - ZONE #7
CDI-742-WT-8-8	1	RED LION PXU KEYPAD CONTROLLER - REM STORE - 8 HOT-R - ZONE #8 - LEFT BOTTOM DECK
CDI-742-WT-8-9	1	RED LION PXU KEYPAD CONTROLLER - REM STORE - 8 HOT-R - ZONE #9 - RIGHT BOTTOM DECK



Ordering Parts

SUBMIT AN INQUIRY

Once you have located the part(s) you need, please keep note of the **PART NUMBER**. We will need to know the exact part number to ensure the correct items are ordered.

To begin your parts order, use either method listed below:

1. Submit an Inquiry on our Website

This is the easiest way to ensure we have all information for your part order. Once we receive your request, we will follow up with details, pricing, and payment for the order.

www.customdelisinc.com/parts

(see adjacent example of the Parts Inquiry Form page on our website)

2. Send us an Email

You may also send your Part Order Inquiry to the email below. Please be sure to include the **part number(s)** of the items you need.

partorders@customdelisinc.com

PARTS INQUIRY FORM

Within our [Parts Catalog](#), locate the part(s) you need, and keep note of the **part serial number**. Once you have the specific info, fill out the form below to submit an order request for the parts you need. We will follow up to your request as soon as possible.

Purchaser Information:

*Your Name

*Email Address

*Phone Number

*Part Serial Number (Please enter the serial number for the part you need)

Need Help locating part numbers? call us at (800) 275-3159 and provide the serial number for the unit you are working. You may also email us with your request

PAYMENT & SHIPPING

Once we have received your inquiry, we will follow up with next steps regarding your quote, payment and delivery.

We accept major credit cards (Visa, MasterCard, etc.). If you would like to apply for an account we will send you a credit application.

Stock parts usually ship 1 or 2 days by UPS or FedEx. Specially manufactured parts usually ship out between 1-3 weeks.